



AGMA LOCKS

सुरक्षा से समझौता नहीं

"AGMA LOCKS" Manufactures are dedicated to provide maximum security with highest standard Quality.

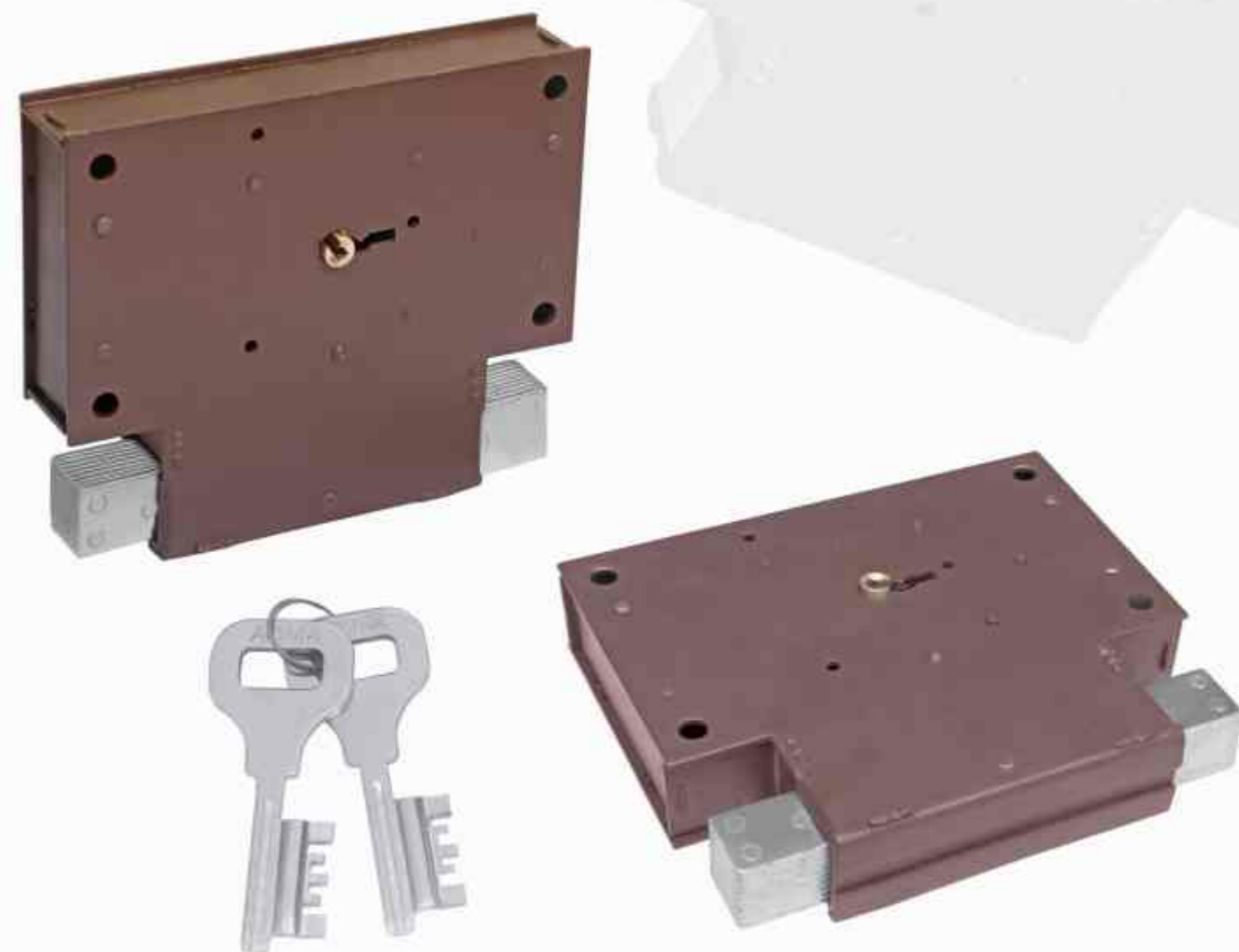
A strong research and development in engaged in improvements, creations and innovations in existing line of production.

We would like to introduce ourselves as one of the pioneers & manufacturer of brand **"AGMA LOCKS"**. We've brought the locks to the market carefully selected & engineered technology.

Keeping in view the Indian market which is cost sensitive and very quality conscious as well. We have adapted the products manufactured by us to suit all segments after continuous researches & developments by our highly qualified engg skills.

**CENTER SHUTTER LOCK (5-LEVERS)**

LOCK BODY	: M.S
MODEL NO.	: NA
FINISH	: POWDER COATING, LOCKING BOLT : BCP
LOCK BODY SIZE (mm)	: 220 X 102 X 38

**FIGHTER CENTER SHUTTER LOCK (8-LEVERS)**

LOCK BODY	: M.S
MODEL NO.	: NA
FINISH	: POWDER COATING, LOCKING BOLT : BCP
LOCK BODY SIZE (mm)	: 165 X 140 X 35



CENTER SHUTTER LOCK MEDIUM

LOCK BODY : M.S
 MODEL NO. : NA
 FINISH : POWDER COATING, LOCKING BOLT : BCP
 LOCK BODY SIZE (mm) : 166 X 95 X 35

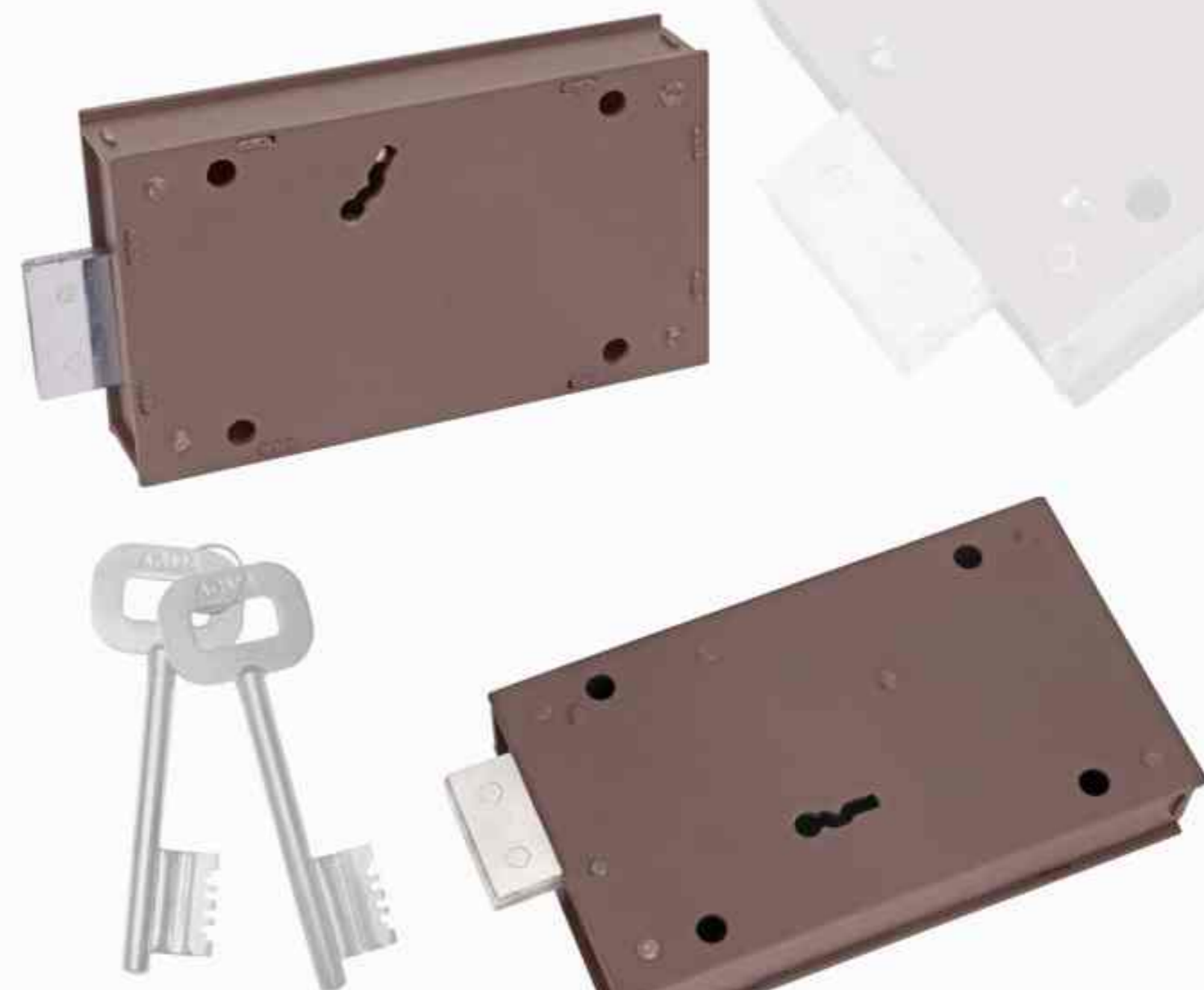


SIDE SHUTTER LOCK HEAVY-14MM LOCKING BOLT (3-CHALL)

LOCK BODY : M.S(POWDER COATING)
 MODEL NO. : NA
 FINISH : M.S (B.C.P)
 LOCK BODY SIZE (mm) : 165 X 95 X 35

**GODOWN LOCK HEAVY-14 MM LOCKING BOLT(3-CHALL)**

LOCK BODY	:	M.S.(POWDER COATING)
MODEL NO.	:	NA
FINISH	:	M.S (B.C.P)
LOCK BODY SIZE (mm)	:	165 X 95 X 35

**SIDE SHUTTER LOCK(3-CHALL)**

LOCK BODY	:	M.S.(POWDER COATING)
MODEL NO.	:	NA
LOCKING BOLT	:	M.S (B.C.P)
LOCK BODY SIZE (mm)	:	165 X 95 X 35

**GODOWN LOCK(3-CHALL)**

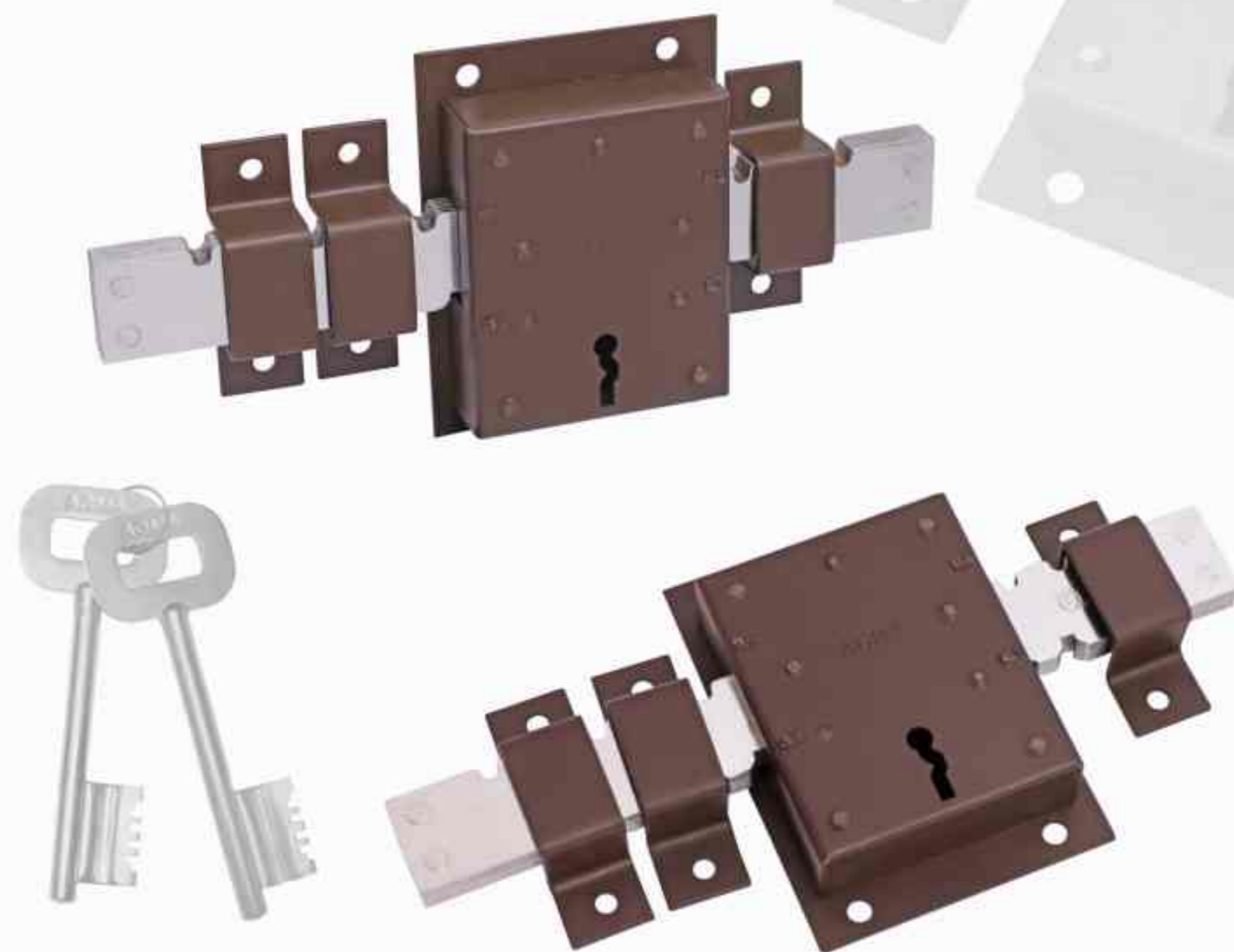
LOCK BODY	:	M.S.(POWDER COATING)
MODEL NO.	:	NA
FINISH	:	M.S (B.C.P)
LOCK BODY SIZE (mm)	:	165 X 95 X 35

**UNIVERSAL SIDE SHUTTER/GODOWN LOCK**

LOCK BODY	:	M.S.(POWDER COATING)
MODEL NO.	:	NA
LOCKING BOLT	:	M.S (B.C.P)
LOCK BODY SIZE (mm)	:	165 X 95 X 35

**GODOWN LOCK SUPREME (3-CHALL) SMALL**

LOCK BODY	:	M.S.(POWDER COATING)
MODEL NO.	:	NA
FINISH	:	M.S (B.C.P)
LOCK BODY SIZE (mm)	:	125 X 90 X 30

**10-CHALL DOOR LOCK (P.C)**

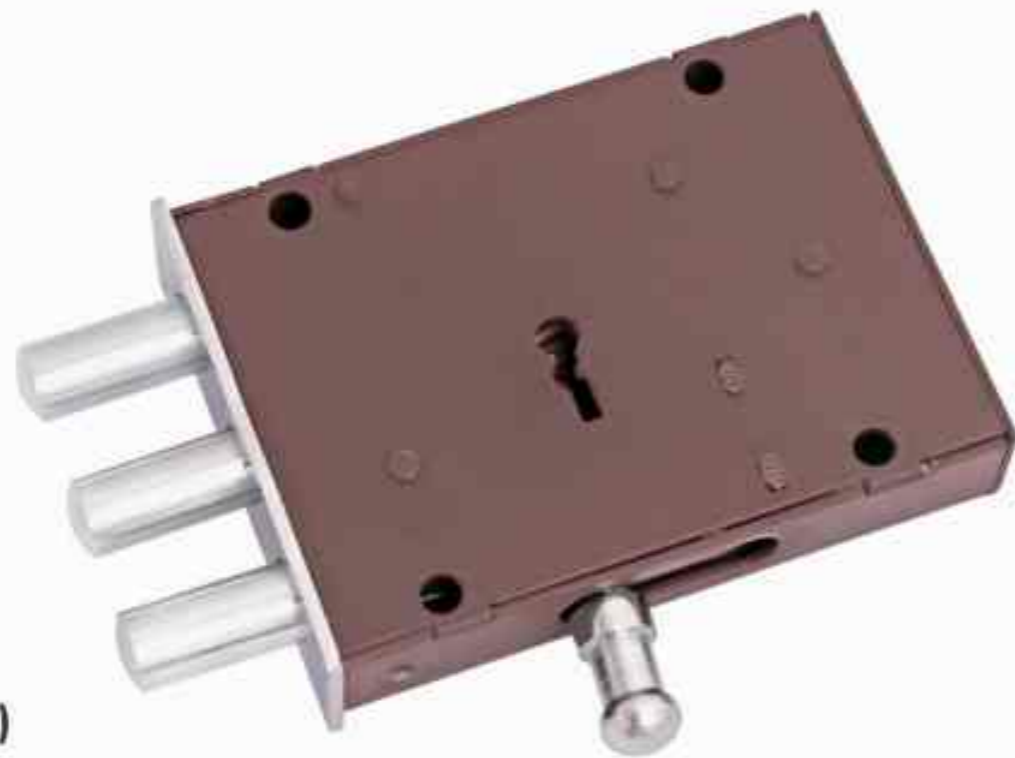
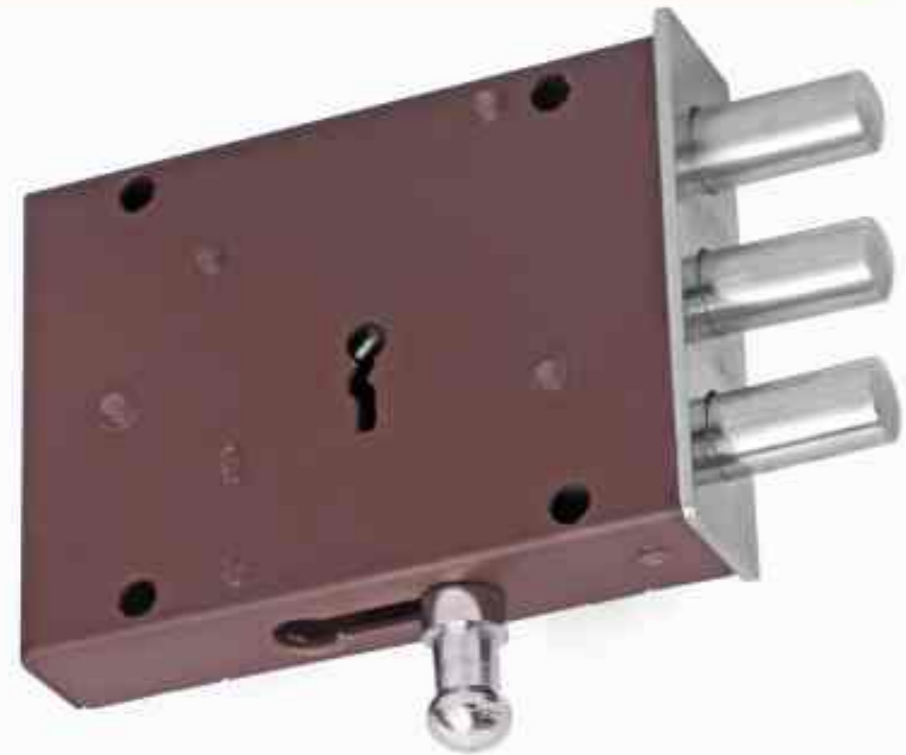
LOCK BODY	:	M.S.(POWDER COATING)
MODEL NO.	:	NA
LOCKING BOLT	:	M.S (B.C.P)
LOCK BODY SIZE (mm)	:	125 X 90 X 30

**6-CHALL DOOR LOCK (P.C)**

LOCK BODY	:	M.S(POWDER COATING)
MODEL NO.	:	NA
LOCKING BOLT	:	M.S (B.C.P)
LOCK BODY SIZE (mm)	:	125 X 90 X 30

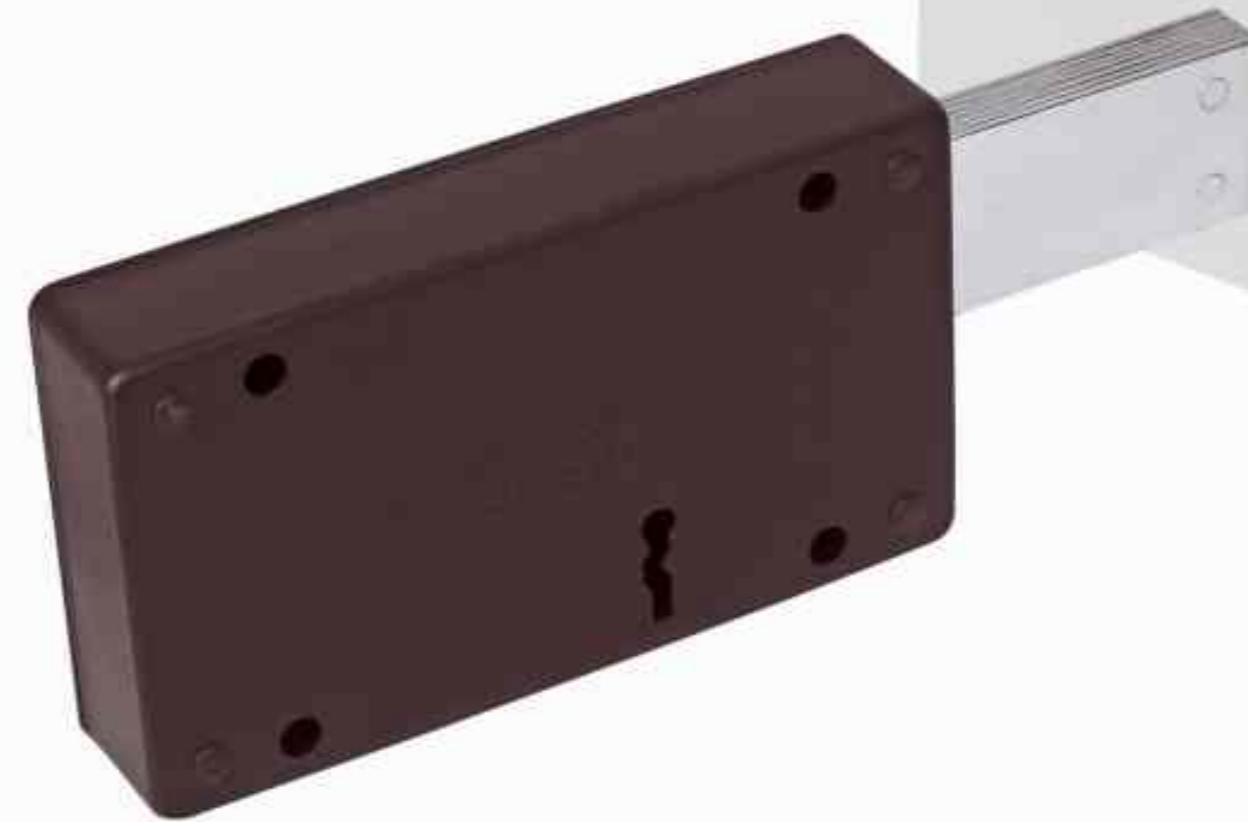
**RIM DEAD BOLT LOCK**

LOCK BODY	:	M.S(POWDER COATING)
MODEL NO.	:	NA
LOCKING BOLT	:	M.S (B.C.P)
LOCK BODY SIZE (mm)	:	110 X 80 X 22



6-LEVER RIM LOCK (3-PINS)

LOCK BODY : M.S.(POWDER COATING)
 MODEL NO. : NA
 LOCKING BOLT : M.S (B.C.P)
 LOCK BODY SIZE (mm) : 110 X 80 X 22



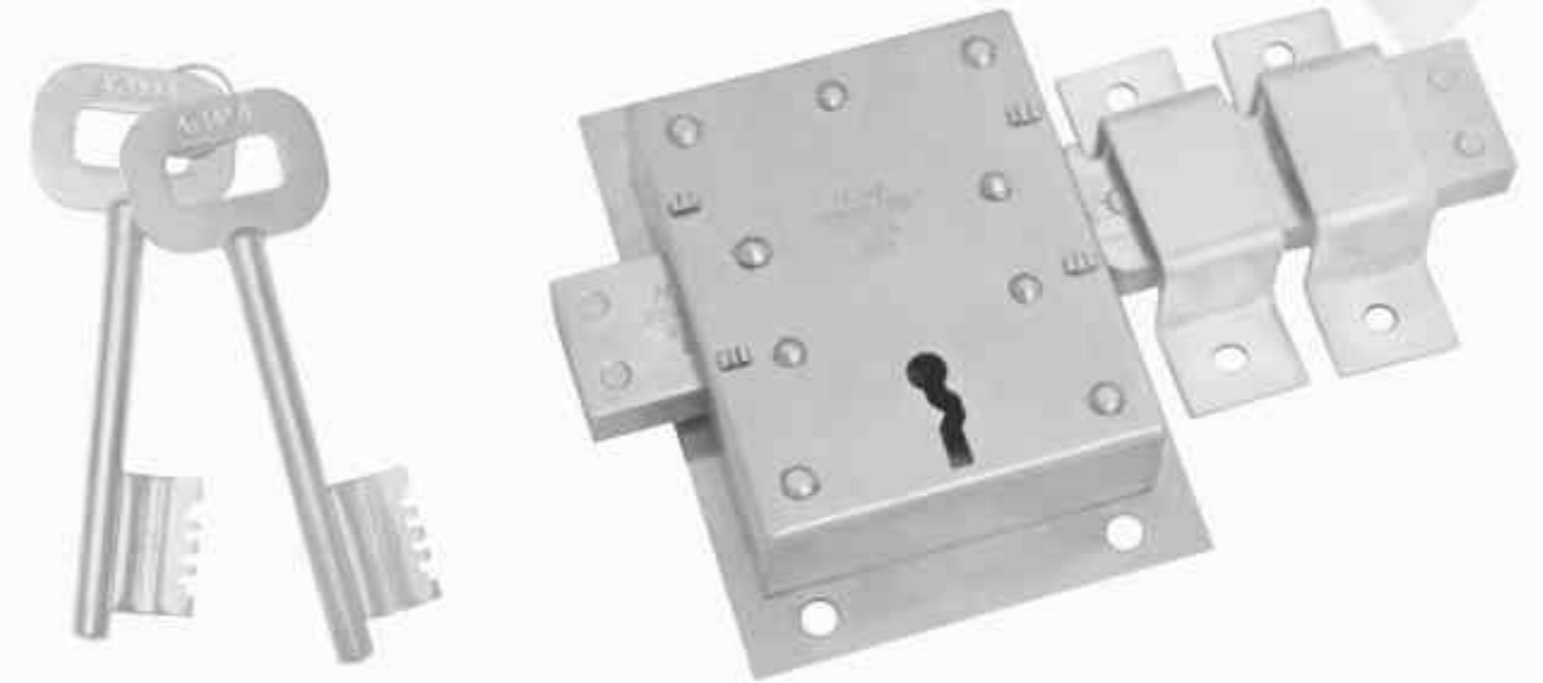
**UNIVERSAL SIDE SHUTTER/GODOWN LOCK
 (WITH 14 MM LOCKING BOLT)**

LOCK BODY : M.S.(POWDER COATING)
 MODEL NO. : NA
 LOCKING BOLT : M.S (B.C.P)
 LOCK BODY SIZE (mm) : 165 X 95 X 35



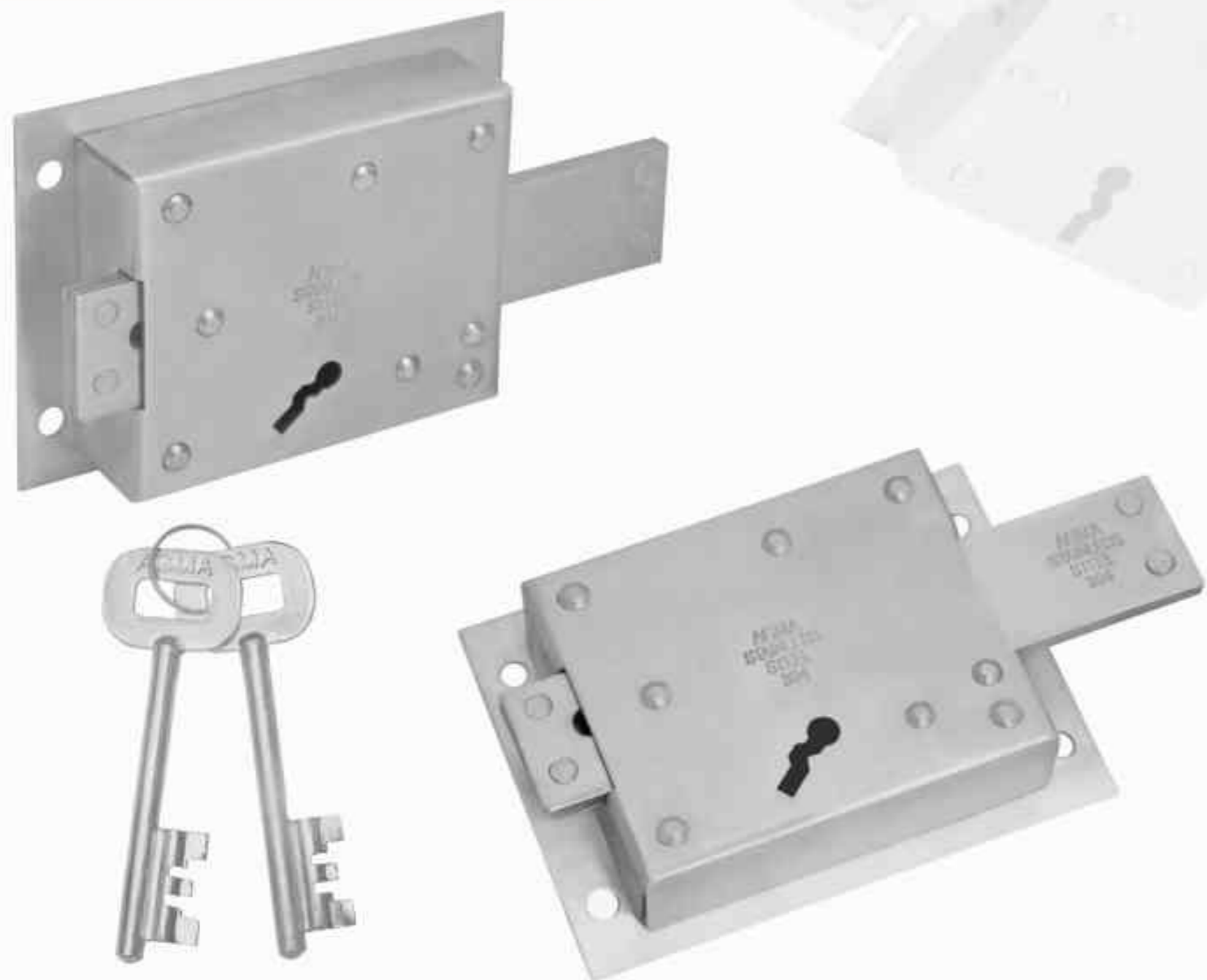
10-CHALL DOOR LOCK (S.S)

LOCK BODY : STAINLESS STEEL 304- GRADE
 MODEL NO. : NA
 LOCKING BOLT : STAINLESS STEEL 304-GRADE
 LOCK BODY SIZE (mm) : 125 X 90 X 30



6-CHALL DOOR LOCK (S.S)

LOCK BODY : STAINLESS STEEL 304- GRADE
 MODEL NO. : NA
 LOCKING BOLT : STAINLESS STEEL 304-GRADE
 LOCK BODY SIZE (mm) : 125 X 90 X 30



GODOWN LOCK SUPREME

LOCK BODY : STAINLESS STEEL 304-GRADE
 MODEL NO. : NA
 LOCKING BOLT : STAINLESS STEEL 304-GRADE
 LOCK BODY SIZE (mm) : 125 X 90 X 30



6-TURN DOOR LOCK

LOCK MATERIAL : M.S. CYLINDER : ZINC ALLOY
 MODEL NO. : NA
 FINISH : STAINLESS STEEL
 LOCK BODY SIZE (mm) : 199 X 80 X 40



3-TURN DOOR LOCK

LOCK MATERIAL : M.S. CYLINDER : ZINC ALLOY
 MODEL NO. : NA
 FINISH : STAINLESS STEEL
 LOCK BODY SIZE (mm) : 133 X 80 X 40



TRI BOLT ULTRA

LOCK BODY : M.S. CYLINDER : BRASS, KEYS : DIMPLE KEY (BRASS)
 MODEL NO. : NA
 FINISH : STAINLESS STEEL
 LOCK BODY SIZE (mm) : 126 X 96 X 54

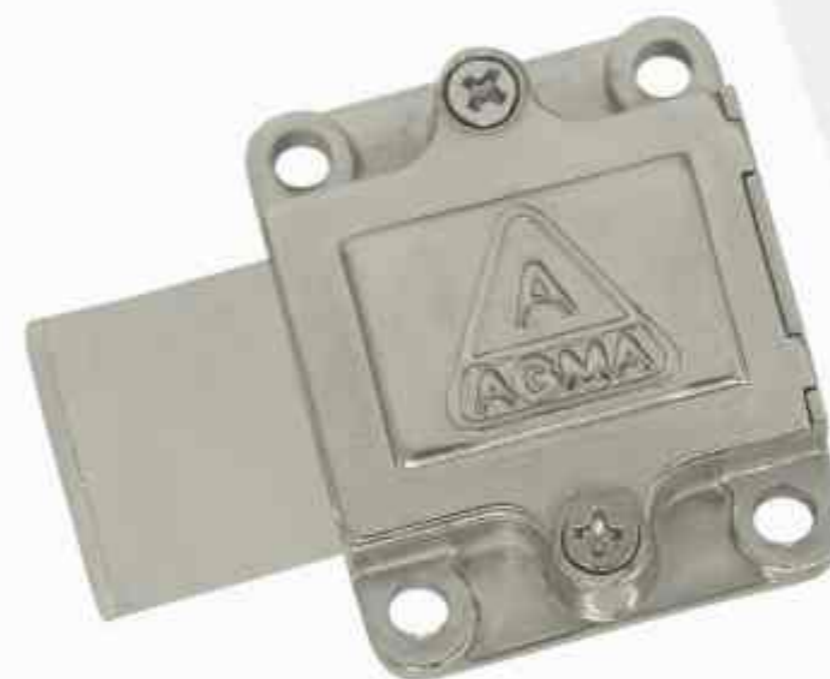
DOOR LOCK SERIES (PIN TUMBLAR & ULTRA KEYS)



RIM LOCK ULTRA

LOCK BODY	: M.S. CYLINDER : BRASS, KEYS : DIMPLE KEY(BRASS)
MODEL NO.	: NA
FINISH	: STAINLESS STEEL
LOCK BODY SIZE (mm)	: 157 X 85 X 52

CUPBOARD LOCK ULTRA KEY SERIES



MULTI PURPOSE LOCK (WAVE KEY)

LOCK BODY	: M.S
KEYS	: BRASS (WAVE KEY)
LOCKING BOLT	: M.S.
CYLINDER	: ZAMAK-3 (ZINC)
CYLINDER LENGTH	: 25mm
MECHANISM	: 5 LEVER (BRASS MECHANISM)
KEY ROSE	: SS-304



MINI CUPBOARD LOCK (ULTRA KEY)

LOCK BODY	: M.S
KEYS	: BRASS
LOCKING BOLT	: ZAMAK-3 (ZINC)
CYLINDER/TUMBLER	: ALU/BRASS
CYLINDER LENGTH	: 21mm
MECHANISM	: 8 PIN MECHANISM
KEY ROSE	: SS-304



CUP BOARD LOCK (ULTRA KEY)

LOCK BODY	: M.S
KEYS	: BRASS
LOCKING BOLT	: ZAMAK-3 (ZINC)
CYLINDER/TUMBLER	: ALU/BRASS
CYLINDER LENGTH	: 25mm
MECHANISM	: 8 PIN MECHANISM
KEY ROSE	: SS-304



6 LEVER MORTISE LOCK

LOCK BODY	: M.S (POWDER COATING)
FRONT PLATE	: M.S (B.C.P)
MODEL NO.	: NA
LOCKING BOLT & LATCH	: BRASS
LOCK BODY SIZE (mm)	: 110 X 72 X 15



6-LEVER SLIDING LOCK

LOCK BODY	: M.S
MODEL NO.	: NA
LOCKING BOLT	: BRASS
LOCK BODY SIZE (mm)	: 71 X 65 X 15



6-LEVER DEAD LOCK

- LOCK BODY : M.S (POWDER COATING)
- FRONT PLATE : M.S (B.C.P)
- MODEL NO. : NA
- LOCKING BOLT & LATCH : BRASS
- LOCK BODY SIZE (mm) : 71 X 65 X 15



BABY LATCH LOCK

- LOCK BODY : M.S (POWDER COATING)
- FRONT PLATE : M.S (PC/B.C.P)
- MODEL NO. : NA
- LOCKING BOLT & LATCH : BRASS
- LOCK BODY SIZE (mm) : 71 X 65 X 15



6-LEVER CUPBOARD LOCK

LOCK BODY : M.S (POWDER COATING)
 MODEL NO. : NA
 LOCKING BOLT : BRASS
 LOCK BODY SIZE (mm) : 89.5 X 58 X 15.8



6-LEVER CUPBOARD LOCK

LOCK BODY : M.S (B.C.P)
 MODEL NO. : NA
 LOCKING BOLT : BRASS
 LOCK BODY SIZE (mm) : 89.5 X 58 X 15.8



6-LEVER CENTER CUPBOARD LOCK

LOCK BODY	:	M.S (POWDER COATING)
MODEL NO.	:	NA
LOCKING BOLT	:	BRASS
LOCK BODY SIZE (mm)	:	65 X 23 X 83



6-LEVER CENTER CUPBOARD LOCK (C.P)

LOCK BODY	:	M.S
MODEL NO.	:	NA
LOCKING BOLT	:	BRASS
LOCK BODY SIZE (mm)	:	65 X 23 X 83



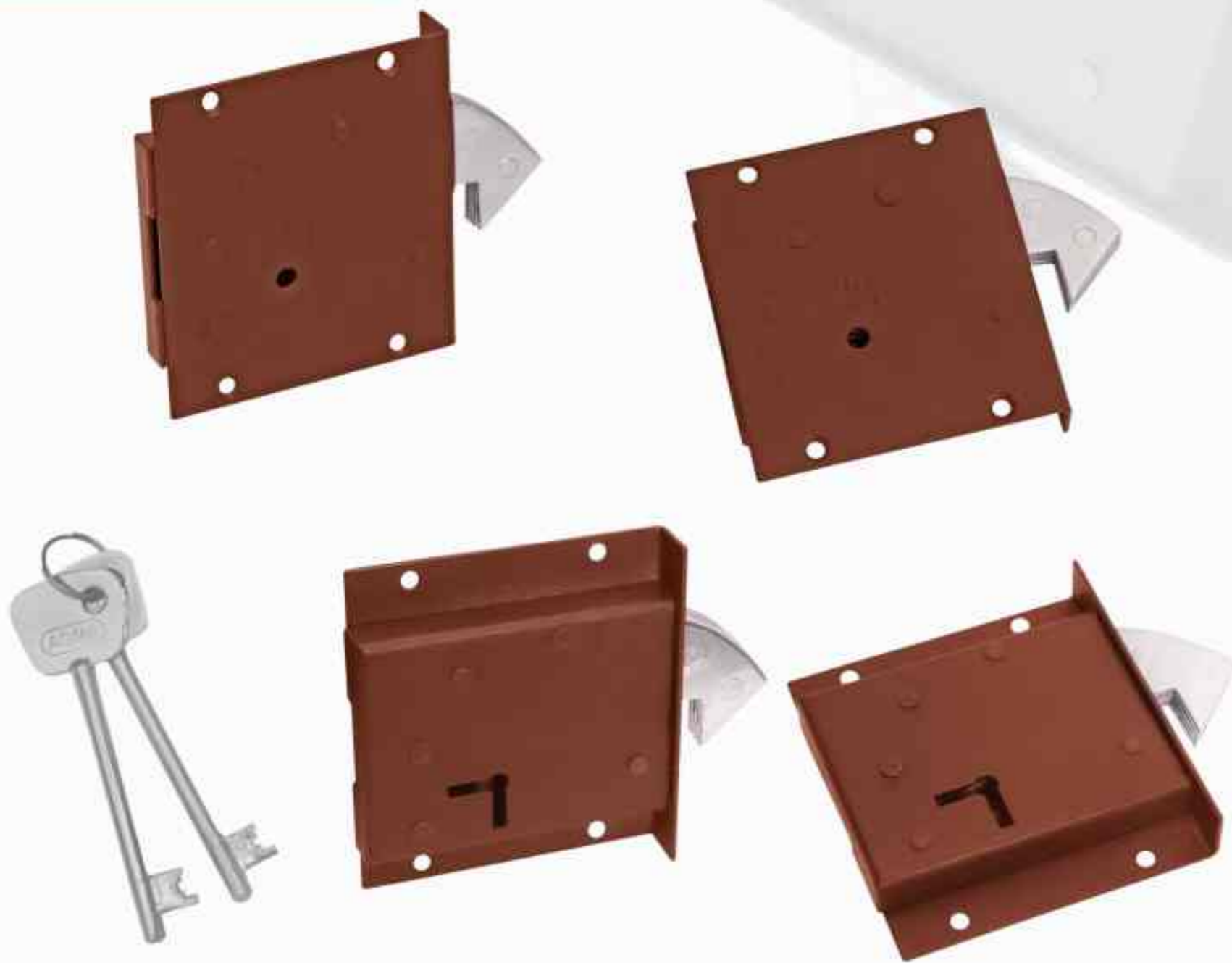
4-LEVER CUPBOARD LOCK (C.P)

LOCK BODY	:	M.S
MODEL NO.	:	NA
LOCKING BOLT	:	BRASS
LOCK BODY SIZE (mm)	:	73 X 47 X 11.5



4-LEVER CUPBOARD LOCK

LOCK BODY	:	M.S (POWDER COATING)
MODEL NO.	:	NA
LOCKING BOLT	:	BRASS
LOCK BODY SIZE (mm)	:	73 X 47 X 11.5



SLIDING LOCK SET (FOR 3/4" BOARD)

LOCK BODY	:	M.S (POWDER COATING)
MODEL NO.	:	NA
LOCKING BOLT	:	M.S (B.C.P)
LOCK BODY SIZE (mm)	:	71.2 X 77.4 X 14.3



MORTISE LOCK (PIN CYLINDER)

LOCK BODY	:	M.S(POWDER COATING)
MODEL NO.	:	NA
LOCKING BOLT/ LATCH	:	BRASS
LOCK BODY SIZE (mm)	:	65 X 95 X 35

**MORTISE HANDLE SET (CYLINDRICAL LOCK)**

HANDLE PLATE/ HANDLE MATERIAL	:	ZINC ALLOY
MODEL NO.	:	109
HANDLE FINISH	:	STAINLESS STEEL
HANDLE SET SIZE (mm)	:	215 X 50 X 42

**MORTISE HANDLE SET (CYLINDRICAL LOCK)**

HANDLE PLATE/ HANDLE MATERIAL	:	STAINLESS STEEL
MODEL NO.	:	203
FINISH	:	STAINLESS STEEL
HANDLE SET SIZE (mm)	:	200 X 50 X 46



MORTISE HANDLE SET (CYLINDRICAL LOCK)

HANDLE PLATE/ HANDLE MATERIAL : ZINC ALLOY
 MODEL NO. : 112
 HANDLE FINISH : STAINLESS STEEL
 HANDLE SET SIZE (mm) : 215 X 50 X 42



MORTISE HANDLE SET (CYLINDRICAL LOCK)

HANDLE PLATE/ HANDLE MATERIAL : STAINLESS STEEL
 MODEL NO. : 202
 FINISH : STAINLESS STEEL
 HANDLE SET SIZE (mm) : 200 X 50 X 46



MORTISE HANDLE SET (CYLINDRICAL LOCK)

HANDLE PLATE/HANDLE : BRASS
 MODEL NO. : 205
 FINISH : SILVER GOLD
 HANDLE SET SIZE (mm) : 202 X 44.4 X 50



MORTISE HANDLE SET

MATERIAL : HANDLE- ZINC ALLOY, PLATE- M.S.
 MODEL NO. : 101
 FINISH : BRIGHT CHROME POLISH
 HANDLE SET SIZE (mm) : 184.3 X 42 X 50



MORTISE HANDLE SET

MATERIAL : BRASS
MODEL NO. : 205
FINISH : STAINLESS STEEL
HANDLE SET SIZE (mm) : 202 X 44.4 X 50



MORTISE HANDLE SET

MATERIAL : BRASS
MODEL NO. : 205
FINISH : SILVER GOLD
HANDLE SET SIZE (mm) : 202 X 44.4 X 50



MORTISE HANDLE SET

MATERIAL : ZINC ALLOY
 MODEL NO. : 104
 FINISH : STAINLESS STEEL
 HANDLE SET SIZE (mm) : 215 X 50 X 50



MORTISE HANDLE SET

MATERIAL : STAINLESS STEEL
 MODEL NO. : 201
 FINISH : STAINLESS STEEL
 HANDLE SET SIZE (mm) : 209 X 56 X 40



MORTISE HANDLE SET

MATERIAL : ZINC ALLOY
 MODEL NO. : 105
 FINISH : STAINLESS STEEL
 HANDLE SET SIZE (mm) : 210 X 55 X 55



MORTISE HANDLE SET

MATERIAL : ZINC ALLOY
 MODEL NO. : 106
 FINISH : STAINLESS STEEL
 HANDLE SET SIZE (mm) : 212 X 55 X 50





MORTISE HANDLE SET

MATERIAL : ZINC ALLOY
 MODEL NO. : 107
 FINISH : STAINLESS STEEL
 HANDLE SET SIZE (mm) : 215 X 50 X 45



MORTISE HANDLE SET

MATERIAL : ZINC ALLOY
 MODEL NO. : 108
 FINISH : STAINLESS STEEL
 HANDLE SET SIZE (mm) : 205 X 47 X 48



MORTISE LOCK HANDEL SET



MORTISE HANDLE SET

MATERIAL : ZINC ALLOY
MODEL NO. : 109
FINISH : STAINLESS STEEL
HANDLE SET SIZE (mm) : 215 X 50 X 42

MORTISE LOCK HANDEL SET



MORTISE HANDLE SET

MATERIAL : ZINC ALLOY
MODEL NO. : 110
FINISH : STAINLESS STEEL
HANDLE SET SIZE (mm) : 215 X 50 X 51



MORTISE HANDLE SET

MATERIAL : ZINC ALLOY
 MODEL NO. : 111
 FINISH : STAINLESS STEEL
 HANDLE SET SIZE (mm) : 215 X 50 X 42



MORTISE HANDLE SET

MATERIAL : ZINC ALLOY
 MODEL NO. : 112
 FINISH : STAINLESS STEEL
 HANDLE SET SIZE (mm) : 215 X 50 X 42

MORTISE LOCK HANDLE SET



MORTISE HANDLE SET

MATERIAL	:	HANDLE- ZINC ALLOY, PLATE- M.S
MODEL NO.	:	101
FINISH	:	POWDER COATING
HANDLE SET SIZE (mm)	:	184.3 X 42 X 50



RIGHT CHOICE FOR SECURITY

For trade enquiries please write to

AGMA LOCKS

SIKHERA ROAD, MODI NAGAR (U.P)

Phone : +91 9837054419, +91 9837634991

Email : agmalocks@hotmail.com

Website : www.agmalocks.com

Customer Care no : +91 6398002346